



21 DAYS OF PRAYER

FAMILY CALENDAR PRAYER PROMPTS

 Color in the icons as your family completes each day.



AUG 18
Psalm 27:13-14

PROMPT:
Pray and thank God for how good He is.



AUG 19
Mark 9:23-24

PROMPT:
Pray for someone you know who is sick or needs healing.



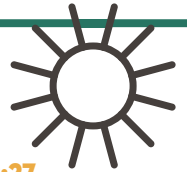
AUG 20
Hebrews 4:16

PROMPT:
Pray and ask God to help you give grace to others as He has to you.



AUG 21
2 Corinthians 12:9

PROMPT:
Pray and thank God for uniquely designing you.



AUG 22
Jeremiah 32:27

PROMPT:
Pray and ask God for help with something hard.



AUG 23
John 15:7

PROMPT:
Pray and ask God to help you follow and obey His commands.



AUG 24
1 Corinthians 15:58

PROMPT:
Pray and ask God to help you do the right thing even when it's hard.



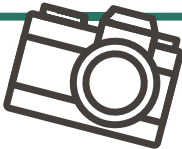
AUG 25
2 Timothy 4:5

PROMPT:
Pray and ask God to give you courage to share Jesus with someone.



AUG 26
James 1:5

PROMPT:
Pray and ask God to help you make good decisions.



AUG 27
Titus 3:1-2

PROMPT:
Pray and thank God for your parents, teachers, and church leaders.



AUG 28
Romans 10:14-15

PROMPT:
Pray for people who do not know Jesus.



AUG 29
Matthew 9:36-38

PROMPT:
Pray and thank God for missionaries who are sharing the gospel around the world.



AUG 30
Acts 13:52

PROMPT:
Pray and ask God to fill you with joy on good days and bad days.



AUG 31
Mark 12:30-31

PROMPT:
Pray and ask God to help you love Him and love everyone around you.



SEP 1
Ecclesiastes 12:13

PROMPT:
Pray for people who are far from God.



SEP 2
Matthew 7:7-8

PROMPT:
Pray and thank God for your family.



SEP 3
Matthew 11:28-30

PROMPT:
Pray for someone who is going through a hard time.



SEP 4
Deuteronomy 3:24

PROMPT:
Pray and thank God for His good creation.



SEP 5
Psalm 25:4-5

PROMPT:
Pray and thank God for giving us the Bible to show us how to follow Jesus.



SEP 6
Psalm 67:1-2

PROMPT:
Pray that lost people around the world would know God.



SEP 7
Matthew 28:19-20

PROMPT:
Pray and ask that the Holy Spirit would help you share Jesus with others.